

CONTACTS:

PH: (02) 4448 7054

FAX: (02) 44 485 485

# South Coast Goat Network

VOL 3, NUMBER 6

15TH DECEMBER 2007

SPECIAL  
POINTS OF  
INTEREST:

- Don't forget Berry Show
- Goats wanted and For Sale
- Feed intake is what grows your does

INSIDE  
THIS ISSUE:

Sales 2

Feed DM 2

Carrying Capacity 3

Trailors 3

Calculating Forage 4

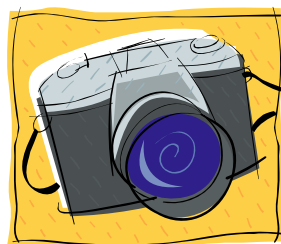
## Hawkesbury Field Day

I would love to splash photographs across this newsletter showing the wonders of the recent Hawkesbury Field Day but we were so busy with goat enquiries that we didn't have time to take photos!

Despite the rain hundreds of interested people flocked to the Hawkesbury Showground and it seemed that they all wanted to know about goats. So to all our new network members we extend to you a very warm welcome and we hope you will enjoy your association with us.

At the field day we were asked a lot of very basic

questions about goats and goat farming. In this newsletter I will address some of the most common and, for all our regular readers, I will



add some new and interesting information. Remember, this newsletter is designed to be a joint effort between all those who enjoy goats. So if you have questions, tips, or information just email me and we will include it in the

next newsletter.

Later in this newsletter I have also included the latest requests for stock and stock that is currently available. If you see your details on the list and you have already purchased or sold your stock, please email me so the request can be deleted from the list.

A forward reminder that the Berry Show will be held early in the new year. This is a great opportunity to show your stock, meet breeders and learn about goats. There will be a display of goat equipment and information of different aspects of goat breeding.

## Mistletoe—Friend or Foe?

Keeping in the Christmas spirit, have you every wondered if the semi-parasitic mistletoe is harmful?. Well, a recent research project has identified two instances when the humble mistletoe can be a problem.

1. The host plant can suffer during times of drought from the mistletoe drawing off nutrients and water.
2. The mistletoe reduces the amount of foliage on the host plant. This often

also affects the height growth of the host tree.

As the plants are generally growing high in trees they appear to be no danger to stock.

So, kissing under the mistletoe is OK - so enjoy!



*Please  
remember to  
notify the  
network if you  
have sold your  
stock or made a  
purchase from  
the network list.*

## Stock 4 Sale - Commercial

The following commercial (unregistered or cross-bred) stock is currently for sale.

- Xbred boers: Robert ph:02 4571 1532
- Wethers 4months old: Samuel, samuelburke@hotmail.com.au
- Full blood bucks and does (\$100-\$200): Matthew, mattphair@hotmail.com
- Xbred boer bucks and does (\$80): Matthew, mattphair@hotmail.com
- Xbred boer buck & doe kids: Kerry, ph:0424 647 058
- Boer kids: Alf & Sandra, asfaz@exemail.com.au
- Xbred boer does & wethers: Col, blackbunny@aussiebroadband.com.au

Please contact the seller directly.

## Stock Wanted - All Goats

The following stock has been requested.

- Commercial boer does: Jan, kurrajong.farm@gmail.com
- Commercial boer does: Robyn, robyn.diamond3@bigpond.com
- Commercial boer does: Kerrie, kerobl@bigpond.net.au
- Lease boer buck: Kate, whenwood@gmail.com
- Commercial does: Denise, stevedenise1@bigpond.com
- Commercial does: Bob & Anne, bobthebrickie@gmail.com
- Registered boer does: Karl, karl@moonlitecandles.com.au
- Registered buck and doe: Pam, relapak@zip.com.au
- Registered boer does: Eve & Greg, eve\_langham@hotmail.com

## DM Values of Feed

The dry matter (DM) intake for an adult goat varies from less than 3kg DM per 100 kg of live weight per day for meat goats and 7kg DM per 100 kg live weight per day for lactating dairy goats.

Green forage intake per day for a 60kg

goat is usually between 1.5 and 2kg DM, while hay intake is between 1.2 and 2.4 kg DM.

Here are some DM values for common feeds:

- Oats (grazing) 16%
- Ryegrass (perennial) 27%
- Lucerne hay 90%
- Oaten hay 90%
- Oats (seed) 91%

Wheat (seed) 89%

Cottonseed meal 92%

Corn/maize 90%

Clover (grazing) 18%

As well as DM it is important to consider the protein and metabolisable energy of any feed provided to your stock.



## Carrying Capacity

Do you know the carrying capacity of your farm? Well here is a simple way of determining this important value.

**Equipment:** tape measure, set square, string, tent pegs, scissors or grass shears, bucket, scales, pencil and paper, and a microwave oven.

**Step 1:** select an area of paddock that is typical of your farm. Mark off a 50cm x 50 cm square of ground using the tape measure, set square, string and pegs.

**Step 2:** Cut all vegetation inside the marked off area down to 5cm above

the ground and place the clippings in the bucket.

**Step 3:** Weigh and record the entire contents of the bucket.

**Step 4:** Measure out 50g of the bucket content. Cut up the sample into approximately 25mm pieces and place on a microwave safe plate.

**Step 5:** Microwave on high for 5 to 6 minutes or until sample is dry. The time will depend on the strength of the microwave, so it is important to heat in one minute intervals until the sample is dry. To prevent the sample from catching on fire place a small

cup of water in the microwave with the sample.

**Step 6:** weigh the dried sample.

**Step 7:** Divide the dry sample weight by the original sample weight. This is the dry matter ratio. Multiply by 100 gives the percentage of dry matter.

This percentage can now be used to calculate the total dry matter per square meter and for the entire property.

The dry matter (DM) in the total bucket is found by multiplying the dry matter percentage by the weight of the original bucket sample.

## Goat Trailer - Made to measure

Do you have problems moving your stock from place to place? Well maybe it's time to invest in a new goat trailer. Here are a few inclusions that will make moving stock easy.

1. Raised mesh floor: keeps everything dry and clean.
2. Separate compartments: allows you to separate bucks, does and kids. Ensure that the dividers are

removable.

3. Several access doors: so that you can reach stock without having to move others.
4. Loading ramp: ideally have the back gate double as a ramp.
5. Ramp sides: Using end gates as wings for the loading ramp.

6. Cover: sturdy canvas cover with air vents/windows.
7. Dual wheels: a must for stability.



*“He who lets the goat be laid on his shoulders is soon after forced to carry the cow”  
Italian Proverb*

## More Carrying Capacity

The dry matter per square meter is found by multiplying the above value by 4.

Now that you know the dry matter in one square metre you can determine the dry matter in the entire paddock by multiplying the one square meter value by the size of the paddock (in square meters).

**Summary:**

$\text{Dry matter \%} = (\text{dry weight}) / (\text{wet weight}) \times 100$

$\text{Moisture content} = 1 - \text{dry matter \%}$

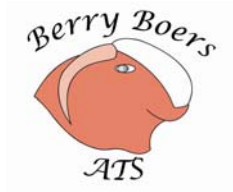
$\text{DM/hectare} = \text{total wet weight} \times \text{dry matter \%} \times 1000$

Because some pasture will be trampled or otherwise made inedible it is suggested that the actual available forage if one

fifth of the standing dry matter in a paddock.

The Dry Sheep Equivalent (DSE) requires approximately 1.1 kg of dry matter per day. As goats have a similar DSE to merino sheep it is easy to calculate how long a particular herd of goats can remain in a particular paddock before the feed runs out.





Theresa Mitchell  
 Berry Boers  
 PO Box 379  
 Berry, NSW, Australia  
 2535

E-mail: [ktmitchell@shoalhaven.net.au](mailto:ktmitchell@shoalhaven.net.au)  
 E-mail: [Theresa@aerots.com.au](mailto:Theresa@aerots.com.au)

**References:**

Feedback: Meat and Livestock Industry Journal, Nov/ Dec 2006

SectionB - Pasture and vegetation assessment  
<http://www.agric.nsw.gov.au/>

Milliar, G., Conway, A. & Mills, T. Calculating a gross margin for sheep, goats and cattle enterprises.

Diseases and Management of Goats, University of Queensland, 1984



Merry Christmas From Everyone at Berry Boers



## Number of days of forage

Sometimes its difficult to know just how long to leave stock in a paddock before the feed disappears. Here is a quick estimate of the number of Animal Unit Days per hectare (AUD/ha) of available grazing. [The AUD is the feed for a set number of stock for a set number of days. E.g 15 AUD means one animal for 15 days, or 5 animals for 3 days, or 15 animals for one day]

To calculate the number of days each hectare can carry one DSE it is necessary to divide the available dry matter forage by 1.1 (see previous article on dry matter).

The following table allows for quick calculations, remembering that this is for one DSE which is calculated on one wether weighing 50kg. Does and kids in various stages of growth re-

quire more feed and thus have a greater DSE. Values for the DSE for goats is given below. This table can be used for adjusting the AUD values for your particular herd components.

Standing Dry Matter (SDM) (kg/ha)	Available Forage (SDM/5) (kg/ha)	Animal Unit Days / ha
25	5	4.5
50	10	9
100	20	18
150	30	27
200	40	36
500	100	90
1000	200	180

	DSE ratings for goats of various weights					
	20 kg	30 kg	45 kg	50 kg	55 kg	60 kg
Doe > 1 year with kid	--	--	1.3	1.4	1.6	1.7
Weaner Kid < 1 year	0.9	1.1	--	--	--	--
Wether > 1 year	--	--	0.9	1.0	1.1	1.2
Bucks	--	--	--	--	--	1.5